

MavBridge™ → Dashboard → Statistics

What's in your envelope? Historical processing data is already embedded in your existing systems. MavBridge™ Statistics will assemble that data in a meaningful format to help you make informed processing decisions. No more guess work, no estimates, just the facts. Know exactly what your throughput was last year, last month, yesterday, today and tomorrow. What are the opportunities to improve productivity and reduce cost at your site? Knowing exactly what arrives in your envelope is a good place to start.

Machine Productivity

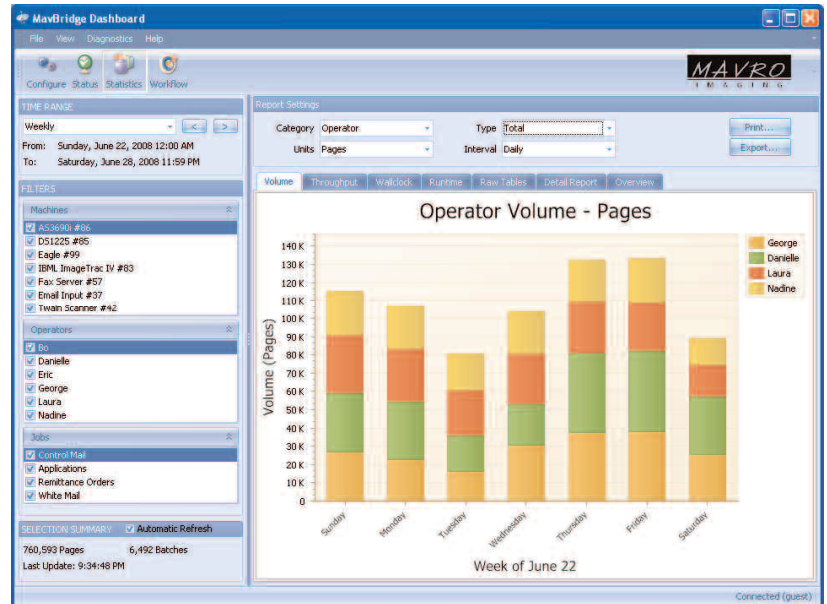
Track scanner productivity by active run time and by total wall clock time. Compare machine throughput by shift, operator or job. Discover potential scanner issues early and minimize downtime.

Operator Performance

Measure operator productivity continuously. View volume, throughput, scanning time, and a variety of detailed information. Evaluate operator performance objectively against other operators, target thresholds or site averages.

Volume Information

Monitor various system benchmarks such as volume by batch, transaction, page and page type. Obtain information such as complete batch listings and jobs processed. Produce comprehensive reports that facilitate accurate internal planning, forecasting and client billing.



MavBridge™ Dashboard provides mailroom productivity at a glance.

MavBridge™ Statistics will help the most experienced mailroom and scanning center managers answer the following questions with confidence.

- ➔ How do you plan for processing tomorrow's mail without knowing where you are today?
- ➔ Do you know exactly what productivity levels you are achieving before and after investing in mailroom automation?
- ➔ Can you verify the productivity improvements achieved during the last year, last month, last week or even yesterday?

Job	Time Range	Grand Total Pages	Throughput	Run Time
Applications	11/29/2007 12:00:00 AM	3672	1916	6897
	11/29/2007 1:00:00 AM	3606	1894	6853
	11/29/2007 2:00:00 AM	3646	1924	6820
	11/29/2007 3:00:00 AM	3658	1908	6900
	11/29/2007 4:00:00 AM	3658	1916	6870
	11/29/2007 5:00:00 AM	3666	1930	6835
	11/29/2007 6:00:00 AM	3638	1909	6858
	11/29/2007 7:00:00 AM	3678	1921	6891
	11/29/2007 8:00:00 AM	3638	1927	6793
	11/29/2007 9:00:00 AM	3678	1910	6931
	11/29/2007 10:00:00 AM	3586	1887	6839
	11/29/2007 11:00:00 AM	3612	1893	6869
	11/29/2007 12:00:00 PM	3606	1912	6789
	11/29/2007 1:00:00 PM	3678	1919	6896
	11/29/2007 2:00:00 PM	3666	1917	6883
	11/29/2007 3:00:00 PM	3710	1949	6880
	11/29/2007 4:00:00 PM	3652	1921	6843
	11/29/2007 5:00:00 PM	3678	1933	6847
	11/29/2007 6:00:00 PM	3652	1920	6845
	11/29/2007 7:00:00 PM	3698	1930	6897
	11/29/2007 8:00:00 PM	3612	1909	6809
	11/29/2007 9:00:00 PM	3678	1927	6869
	11/29/2007 10:00:00 PM	3586	1887	6838
	11/29/2007 11:00:00 PM	3632	1913	6832
Applications Total		87584	45972	164556
Remittance Orders	11/29/2007 12:00:00 AM	6980	3767	6669
	11/29/2007 1:00:00 AM	6984	3745	6712
	11/29/2007 2:00:00 AM	6920	3749	6644
	11/29/2007 3:00:00 AM	6976	3762	6675



OUR COMMITMENT is to exceed every customer's expectation ... continuously

MavBridge™ Statistics Features

MavBridge™ Statistics is a module inside MavBridge™ Dashboard that provides users with a method to track mail processing, monitor status and help identify when targets are not where they should be. The software is a flexible, scalable solution for companies facing the significant challenge of tracking a variety of mail types. Extensive historical data and robust management reports help eliminate operational bottlenecks. MavBridge™ Statistics offers better accountability and accurate assessment of equipment usage and staff performance.

In today's mail and document processing environments, it is critical to bridge the gap between physical paper and electronic processing. With MavBridge™ Statistics, precise technology and staff capabilities are determined before resources are deployed.

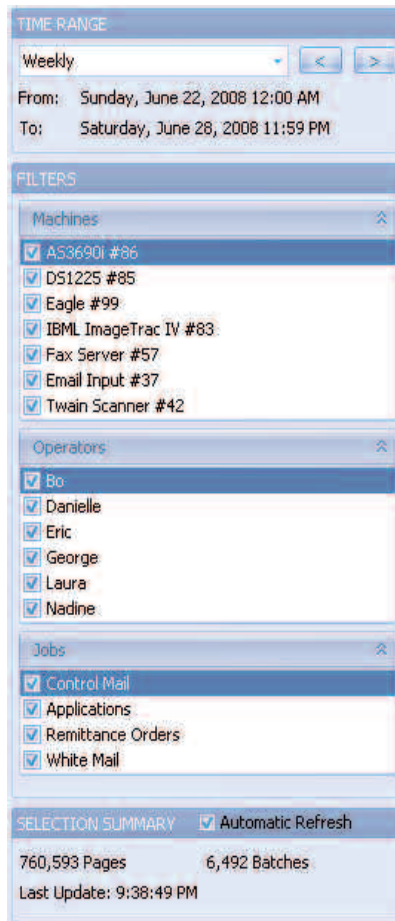
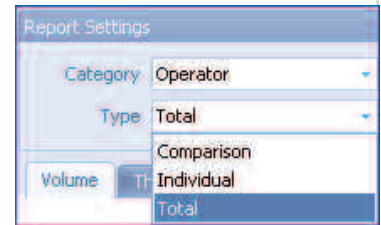
Effective plans to motivate workers through incentive-based pay demand a level of certainty that builds confidence among all staff members. Combining quality tracking metrics and the ability to present an immediate snapshot at any time in the process holds everyone accountable.

MavBridge™ Statistics is easy to install and use. Some of the many benefits include:

- ⇒ Increases utilization of technology and staff
- ⇒ Pinpoints bottlenecks and sets accountability
- ⇒ Supports all scanners – AS3690, DS1225, Eagle, IEM, ImageTrac, NCR, Unisys, TWAIN

Report Settings – a few intuitive, easy-to-use drop down selections provide users hundreds of report options

- Category – Operator, Machine, Job
- Type – Comparison, Individual, Total
- Units – Batches, Transactions, Pages, Page Types, Custom Types
- Interval – Hourly, Daily, Weekly, Monthly, Yearly



Time Range – the most often used time periods (day, week, month, year) can be selected with a single click, while a date/time control provides further flexibility.

Filters – the exact data included in report generation is filtered using the Machines, Operators, and Jobs controls; for example, users can select all operators or just a few and compare their productivity.

Display Window – graphs and reports are automatically updated in real-time throughout the processing day; report tabs allow users to quickly select Volume, Throughput, Wallclock, Runtime and Detail Reports.

Report Printing – the print feature allows users to tailor the appearance of printed reports. A sophisticated output control provides header, footer, border and watermark options, as well

as the opportunity to email customized reports or save them as PDF files.

Data Export – report data is easily saved in XML or Excel-compatible formats allowing users to generate reports with other programs.

Minimum System Requirements

Windows XP ■ Pentium IV 3 GHz ■ 1 GB RAM ■ .NET 2.0

Mavro Imaging is a software development and professional consulting company devoted to enhancing the performance and efficiency of our customers' document and data capture processes.

©2008 Mavro Imaging LLC

MAVRO
IMAGING

www.MavroImaging.com ■ 22 Maple Tree Drive, Westampton, NJ 08060 ■ Phone: 609.949.9010